



MINICON 2010

www.ipms-ontario.org

Doors open 9:00 AM

General Admission \$7.00

Kids under 12 free!!!!

ONTARIO SENIOR CENTER

225 E. "B" ST.; ONTARIO, CALIF.

JUST 1 BLOCK EAST OF EUCLID AVENUE

VENDORS SET UP 7:30 AM

\$50.00 PLUS A MODEL FOR THE RAFFLE

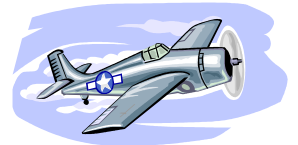
MODEL CONTEST REGISTRATION 8:00-11:30 am

Model entry \$7.00; \$1.00 for ea. additional entry

JUDGING 12:00-1:30 pm

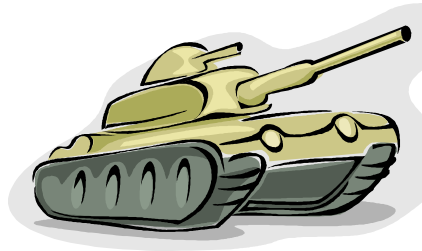
AWARDS/RAFFLE 1:30-2:30 pm

SHOW ENDS 2:30 PM



CATEGORIES

- | | |
|--|---|
| 1. JET SINGLE ENGINE | 1/72 OR SMALLER |
| 2. JET MULTI ENGINE | 1/72 OR SMALLER |
| 3. JET SINGLE ENGINE | 1/48 OR LARGER |
| 4. JET MULTI ENGINE | 1/48 OR LARGER |
| 5. PROP SINGLE ENGINE | 1/72 OR SMALLER-INCLUDES ROTARY WING |
| 6. PROP MULTI ENGINE | 1/72 OR SMALLER-INCLUDES ROTARY WING |
| 7. PROP SINGLE ENGINE | 1/48 OR LARGER-INCLUDES ROTARY WING |
| 8. PROP MULTI ENGINE | 1/48 OR LARGER-INCLUDES ROTARY WING |
| 9. PROP AIRCRAFT | 1/32 OR LARGER-INCLUDES ROTARY WING |
| 10. JET AIRCRAFT | 1/32 OR LARGER ALL TYPES |
| 11. SHIPS-MILITARY AND CIVILIAN | ALL SCALES & TYPES-INCLUDES SUBMARINES |
| 12. ARMOR TRACK & AFV | SMALLER THAN 1/35 INCLUDES SOFT SKIN; HALF TRACKS |
| 13. ARMOR TRACK & AFV | 1/35 OR LARGER PRE-1945 |
| 14. ARMOR TRACK & AFV | 1/35 OR LARGER POST-1945 |
| 15. ARMOR SOFT SKIN | 1/35 OR LARGER; HALF TRACKS; MILITARY TRUCKS AND TRUCKS |
| 16. FIGURES | ALL SCALES |
| 17. AUTOS (CIVILIAN) | ALL SCALES AND TYPES; MOTORCYCLES; RACE CARS; HOT RODS; DRAGSTERS; FUNNY CARS; TRUCKS; CONSTR. EQUIP. |
| 18. DIORAMAS | ALL SCALES AND TYPES |
| 19. MISC | ALL SCALES AND TYPES; PAPER MODELS; SCI FI; DINOSAURS; FICTION |
| 20. JUNIORS | 15 YEARS AND YOUNGER; ALL SCALES AND TYPES |
| 21. SCRATCH BUILT; MAJOR CONVERSIONS; VACUFORM; ALL RESIN KITS | ALL SCALES & TYPES; MAJOR CONVERSIONS MUST BE AT LEAST 20% ALTERED FROM THE ORIGINAL KIT |



OUR CLUB SPONSOR:

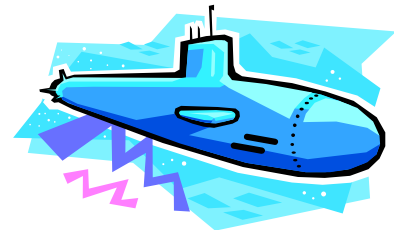
HOBBYLOCKER.COM

mikey@hobbylocker.com

(909) 297-3213

BEST OF SHOW AWARD!

PRESIDENTS CHOICE AWARD!



GEORGE SKROPOS

BARRY WEBB

President

Vice President

A MINIMUM OF 3 MODELS BY 3 DIFFERENT BUILDERS IS REQUIRED TO OPEN A CATEGORY

NO SWEEPS ALLOWED

JUDGES DECISION FINAL

SATURDAY, JUNE 26, 2010